

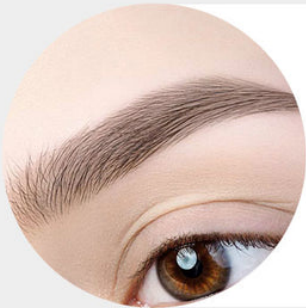
## Unlock the Secrets of Biomaser: The Ultimate Guide to Choosing Your Perfect PMU Machine!

In the ever-evolving world of beauty, Permanent Makeup (PMU) machines have become essential tools for professionals aiming to enhance their clients' natural features. Among the various brands available, Biomaser has garnered attention for its quality and innovation. Choosing the right PMU machine is crucial, as it can significantly impact the results of your work and the satisfaction of your clients. This guide will provide you with insights into what makes Biomaser a standout choice, helping you make an informed decision tailored to your professional needs.

# PRECISION IS ART

2.0 / 2.2 / 2.5 / 2.8 / 3.1 / 3.5 mm Stroke Adjustment Range  
4mm Max Needle Extension.

## 6-Level Stroke Adjustment



### 2.2mm-2.5mm:

Ideal for delicate skin and low-saturation lines.



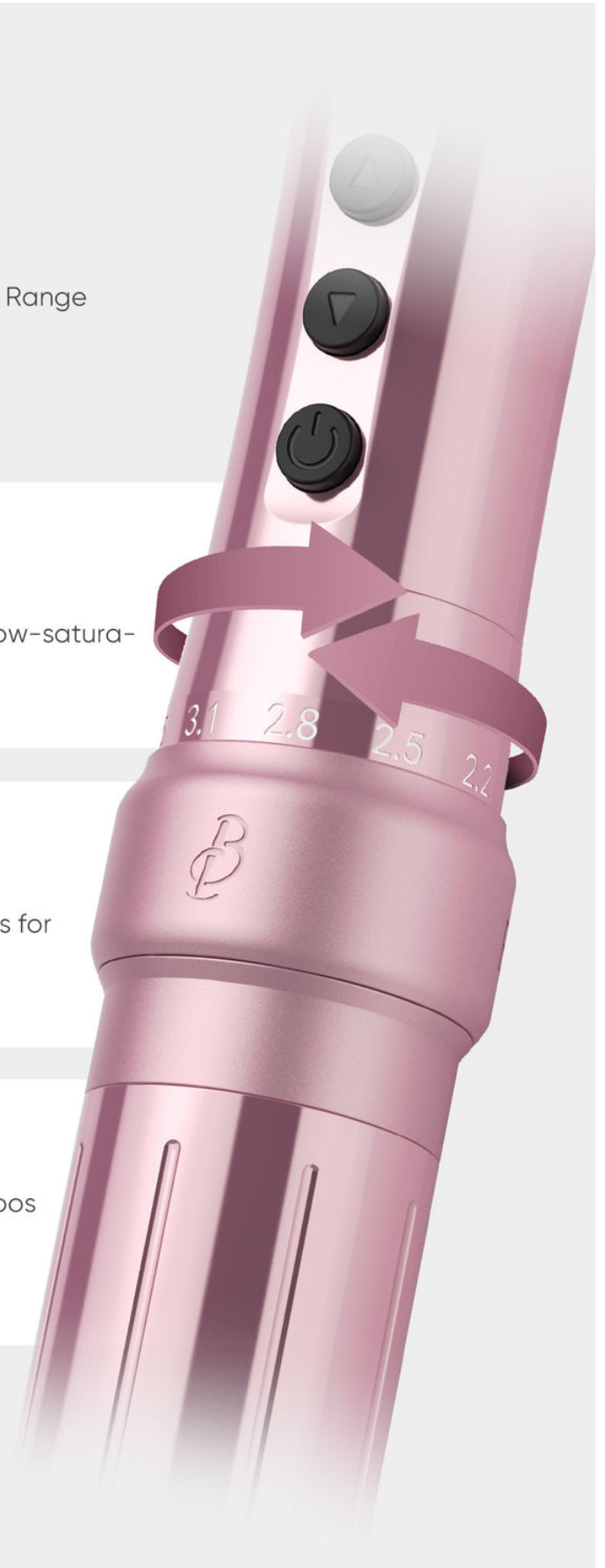
### 2.5mm-3.1mm:

Creates natural, refined lines for brows and lips.



### 3.1mm-3.5mm:

Handles creative small tattoos and high-saturation PMU.



## Understanding PMU Machines

Permanent Makeup machines, commonly referred to as PMU machines, are specialized devices designed to apply pigments to the skin, offering long-lasting makeup effects for features such as eyebrows, eyeliner, and lip color. These machines operate using various methods, including rotary, coil, and digital technologies, each offering different advantages depending on the technique and desired outcome. High-quality machines, like those from [Biomaser](#), provide precision, reliability, and comfort, making them a preferred choice for many professionals. Investing in a top-notch PMU machine not only ensures the quality of the work but also enhances the overall experience for clients, who can enjoy beautifully defined features without the hassle of daily makeup application.

## Why Choose Biomaser PMU Machines?

Biomaser PMU machines are renowned for their unique features that cater specifically to the needs of beauty professionals. One of the standout aspects is their ergonomic design, which allows for prolonged use without causing fatigue. Many users have reported positive experiences, noting the smooth operation and minimal discomfort for clients during procedures. The technology behind Biomaser machines incorporates advanced features that facilitate precise pigment application, ensuring beautiful and long-lasting results. From my conversations with fellow beauty artists, it's clear that the innovation and reliability of Biomaser have made it a favorite in the industry, often leading to satisfied clients who return for touch-ups and referrals.

## Key Features to Consider When Choosing a PMU Machine

When selecting a PMU machine, there are several key features to consider to ensure you make the best choice for your practice. Firstly, needle quality is paramount; high-quality needles contribute to more precise and less painful applications. The weight of the machine also plays a critical role; a lighter machine can reduce strain during long sessions. Ergonomics is another essential factor—machines that fit comfortably in your hand can greatly enhance your control and accuracy. Ease of use is crucial, especially for beginners; look for machines with intuitive controls. Lastly, after-sales support, including warranty and customer service, can make a significant difference, providing peace of mind as you navigate your PMU journey. Assessing these features when comparing options will help you find the machine that best fits your needs.

## Comparing Biomaser with Other Brands

When comparing Biomaser PMU machines to other brands, several factors come into play, such as performance, reliability, and user satisfaction. Many professionals have noted that Biomaser machines consistently deliver impressive results, with minimal downtime for maintenance and repairs. While some competing brands may offer lower prices, the overall value provided by Biomaser—considering quality, durability, and customer support—often justifies the investment. It's essential to conduct thorough research, read user reviews, and perhaps even test different machines to find the right fit for your style and technique. Ultimately, the goal is to choose a machine that not only meets your professional standards but also enhances the experience for your clients.

## Final Thoughts on Biomaser PMU Machines

In summary, the choice of a PMU machine is a significant decision for beauty professionals, impacting both the quality of work and client satisfaction. Biomaser PMU machines offer a blend of advanced technology, ergonomic design, and reliable performance, making them a strong contender in the marketplace. As you navigate your options, consider the unique features that align with your needs and preferences. Remember, investing in the right equipment is key to building a successful PMU practice, and Biomaser stands out as a solid choice for those looking to elevate their artistry.