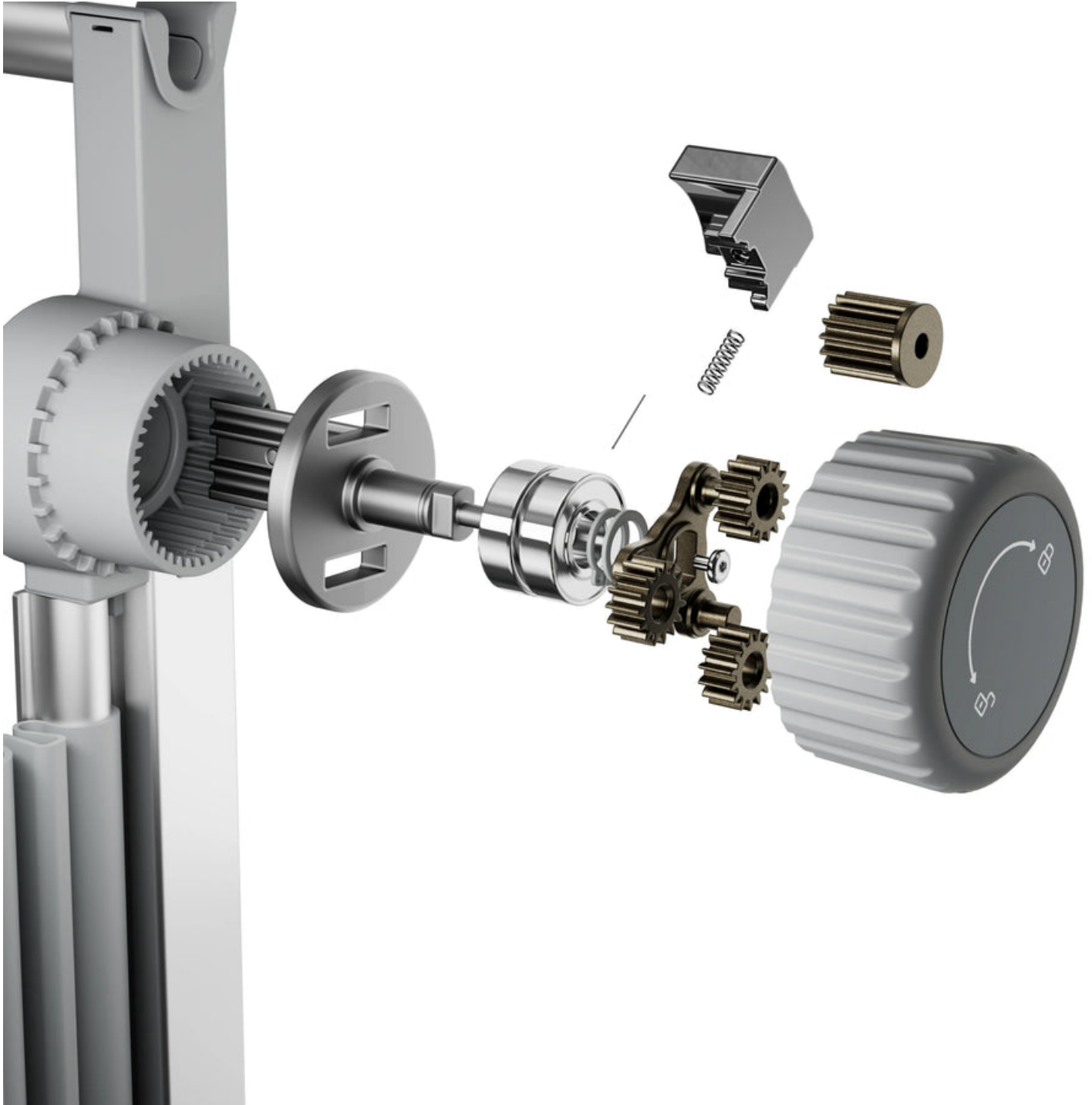


Unlock Your Creativity: Craft the Perfect Tufting Frame for Stunning Projects!

Tufting is an art form that transforms simple yarn into beautiful, textured creations. Whether you're looking to make a cozy rug, a decorative wall hanging, or a unique piece of furniture upholstery, having a proper [diy tufting frame](#) is essential for achieving the best results. A tufting frame provides the stability and tension needed to work effectively, ensuring that your projects not only look good but also stand the test of time. Building your own tufting frame allows you to customize it according to your needs and preferences, giving you the freedom to explore this creative outlet without the limitations of pre-made options. In this article, we'll guide you through the process of creating your own tufting frame, empowering you to elevate your tufting projects to new heights.



Understanding Tufting and Its Importance

Tufting has a rich history that dates back centuries, originating from various cultures that sought to create durable and intricate textiles. Traditionally, tufting involves inserting yarn into a backing material using a tufting gun or a needle, creating raised loops or cut pile designs. This technique is favored for its versatility, allowing artists and crafters to experiment with colors, patterns, and textures. A well-constructed tufting frame is crucial because it holds the backing material taut, providing the necessary support for precise stitching. Without a sturdy frame, your tufting projects may suffer from uneven tension, resulting in unsatisfactory outcomes. Investing time in building a reliable frame will pay off in the form of enhanced craftsmanship and stunning finished pieces.

Materials Needed for Your Tufting Frame

To build your tufting frame, you'll need a few essential materials. Start with sturdy wood, such as plywood or pine, as these types are durable and can withstand the tension from the tufting process. You'll also need some basic tools: a saw for cutting the wood, a drill for assembling the frame, and screws to hold everything together. Additional items such as corner brackets can provide extra stability. Remember to measure your desired frame size accurately; a common size is 36" by 48", but you can adjust this based on your project needs. Don't forget to gather sandpaper for smoothing the edges and a ruler for precise measurements. With these materials at hand, you're ready to create a tufting frame that suits your artistic endeavors.

Step-by-Step Guide to Building Your Tufting Frame

Building your tufting frame involves several straightforward steps. Begin by cutting your wood into the desired lengths. For a rectangular frame, you will need two longer pieces for the sides and two shorter pieces for the top and bottom. A common approach is to use 2"x4" lumber for added stability. Once cut, use sandpaper to smooth out any rough edges to prevent splinters. Next, assemble the frame by attaching the shorter pieces between the longer sides using screws. To enhance durability, consider pre-drilling holes to avoid splitting the wood. After constructing the frame, reinforce the corners with brackets to ensure it remains sturdy during use.

Once the basic frame is built, you'll need to add a backing material. Stretch a piece of canvas or burlap across the frame and secure it tightly using a staple gun. This step is crucial as it provides the surface upon which you'll be tufting. Make sure the backing is taut to prevent any sagging during construction. Finally, adjust the height of your frame to a comfortable working level. If you find the frame too low or high, you can add legs or use a table to adapt to your comfort. These adjustments will enhance your tufting experience, allowing you to focus on creativity rather than discomfort.

Tips for Customizing Your Frame

Customizing your tufting frame can make your crafting experience even more enjoyable. Consider adjusting the size based on your specific projects—making it larger for ambitious designs or smaller for quick crafts. You can also add features like built-in storage for tools or yarn, which can keep your workspace organized. For a personal touch, paint or stain the frame to match your home decor, making it not only functional but also visually appealing. These small changes can make a world of difference in how much you enjoy using your tufting frame.

Maintenance and Care for Your Tufting Frame

Maintaining your tufting frame is essential for ensuring its longevity and functionality. Regularly inspect the frame for any loose screws or damage, especially after extensive use. Tightening screws and replacing worn-out materials will help keep your frame in shape. When it comes to cleaning, a simple wipe-down with a damp cloth is usually sufficient, but be sure to avoid excessive moisture to prevent warping. Additionally, store your frame in a dry place, away from direct sunlight and humidity, to protect it from environmental damage. By taking these maintenance steps, you can ensure that your tufting frame remains a reliable companion for all your creative projects.

Empowering Your Craft with a Custom Tufting Frame

Building your own tufting frame opens up a world of creative possibilities for your tufting projects. By understanding the materials needed, following a step-by-step guide, and customizing your frame to suit your preferences, you can enhance the quality of your work significantly. Regular maintenance will further extend the life of your frame, making it a valuable tool in your crafting arsenal. So gather your materials, unleash your creativity, and embark on your tufting journey with confidence and excitement. Your new frame awaits, ready to support your artistic endeavors!