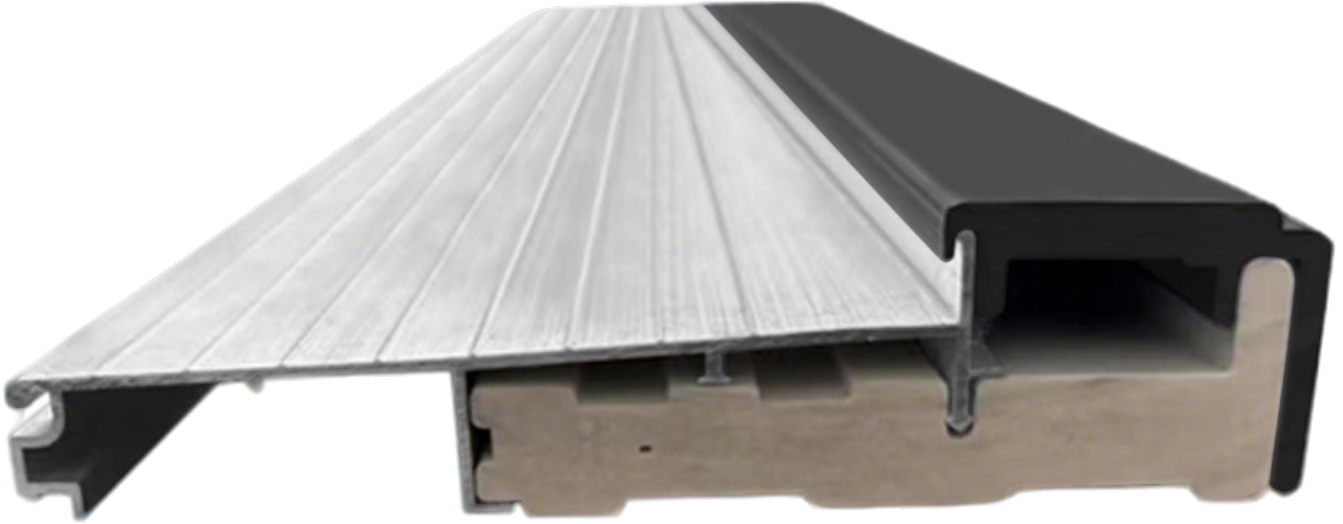


## Unlock the Secrets: Discover the Perfect Entrance Door for Your Home!

Entrance doors are more than just functional elements of a home; they play a crucial role in enhancing aesthetics and ensuring security. The right entrance door can make a strong first impression, setting the tone for the entire home. When choosing an [entrance door](#), several factors come into play, including the material, design, and functionality. Whether you're aiming for elegance, durability, or energy efficiency, understanding your options will help you make an informed decision that complements your home's style while providing the security you need.



### Types of Entrance Doors

When it comes to exterior entrance doors, there are a variety of types to consider—each with unique characteristics and benefits. Wooden doors exude warmth and charm, while fiberglass options offer versatility and durability. Steel doors stand out for their security features, and glass doors add a modern touch to any entryway. It's essential to explore these options thoroughly to find the perfect match for your home.

#### Wooden Doors

Wooden doors are a classic choice that can elevate the aesthetic of any home. Their natural beauty is unparalleled, offering a range of finishes and styles that can be customized to fit your vision. Beyond aesthetics, wooden doors also provide excellent insulation, helping to keep your home comfortable in varying temperatures. I remember when my friend renovated her entrance; she chose a beautifully crafted oak door that not only matched her home's rustic theme but also improved her energy efficiency significantly.

#### Fiberglass Doors

Fiberglass doors are gaining popularity due to their impressive durability and energy efficiency. Unlike wooden doors, they are less susceptible to warping or cracking, making them a great long-term investment. They can also be designed to mimic the appearance of wood without the maintenance, offering a resilient option in various styles. After hearing my neighbor rave about her fiberglass door's low maintenance and energy efficiency, I was convinced it was a solid choice for those wanting beauty without the hassle.

#### Steel Doors

Steel doors are synonymous with strength and security. Their robust construction makes them ideal for homes in areas prone to harsh weather conditions. They can withstand significant impacts, ensuring that your home remains secure. Many steel doors also come with insulation, providing energy savings while keeping your home safe. A family member had a steel door installed last year, and it not only enhanced the security of their home but also improved their heating costs during winter.

#### Glass Doors

Glass doors offer a sleek and modern aesthetic that can brighten any entryway. They come in various designs, including sliding, French, or hinged options, allowing for versatility in style and function. Many modern glass doors also feature energy-efficient designs with tempered glass, providing insulation while allowing natural light to flood in. A close friend recently opted for a glass door in her urban home, and it transformed her entryway into a bright, inviting space while maintaining a sense of privacy with frosted glass options.

## Features to Consider

Selecting the right entrance door goes beyond simply choosing the type; certain features are crucial in ensuring you make the best choice. Insulation properties, security features, energy efficiency ratings, and design options need close consideration. A well-informed choice will not only enhance your home's appearance but also contribute to its comfort and safety.

### Insulation and Energy Efficiency

Proper insulation is essential for maintaining a comfortable home environment and reducing energy costs. A well-insulated door keeps heated or cooled air inside, minimizing the need for excessive heating or cooling. This not only leads to energy savings but also reduces your carbon footprint. My sister recently upgraded to a door with superior insulation, and she was pleasantly surprised by the difference in her energy bills.

### Security Features

Security should always be a priority when selecting an entrance door. Look for features such as reinforced frames, multi-point locking systems, and smart lock options that provide enhanced security. These features ensure that your home remains safe from intruders. A close friend of mine installed a door with a smart lock, which offers convenience and peace of mind, allowing her to monitor access to her home even while away.

### Design Options

The design of your entrance door should complement your home's architectural style. Consider different colors, textures, and hardware options when selecting your door. Whether you prefer a traditional look or a modern minimalist design, there are countless options to match your home's aesthetics. I once helped a neighbor choose a vibrant blue door that became a stunning focal point for her home, showcasing her personality and style.

## Choosing the Right Entrance Door

Finding the perfect entrance door requires careful consideration of your specific needs and preferences. Factors such as budget, style preferences, and climate conditions will influence your decision. Taking the time to evaluate these aspects will ensure you choose a door that not only looks good but also functions well for your home.

### Assessing Your Needs

Begin by evaluating your specific needs, considering your home's layout and your lifestyle. Think about the amount of traffic your entrance door will experience and whether you require additional security features or energy efficiency. A friend of mine assessed her family's needs before choosing a door, and it made all the difference in finding a product that met both aesthetic and functional requirements.

### Consulting Professionals

Don't hesitate to consult with professionals when selecting and installing your entrance door. They can provide valuable insights and recommendations based on your home's unique characteristics. Their expertise can help ensure you choose the best options for your needs, from materials to installation techniques. When my uncle was renovating his entrance, he consulted a local contractor who guided him toward a door that perfectly matched his home's style and needs, simplifying the entire process.

## Making the Right Choice for Your Home

Choosing the right entrance door is a significant decision that impacts both the style and security of your home. By understanding the various types of doors available, the essential features to consider, and how to assess your needs, you can make a choice that enhances your home's curb appeal while ensuring safety and energy efficiency. Take your time exploring your options, and remember that the perfect entrance door is one that reflects your personal taste while serving its functional purpose beautifully.