

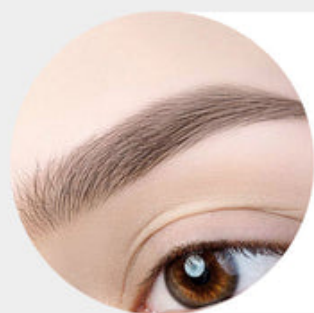
Unlock Your Artistic Potential: Discover the Secrets of Professional Rotary Tattoo Machines!

In the world of tattoo artistry, the tools you choose can significantly impact not only the quality of your work but also your creative expression. Among these tools, the [professional rotary tattoo machine](#) stands out as a game-changer for professional tattoo artists. Unlike traditional coil machines, rotary machines offer a smoother operation, allowing artists to focus on their craft rather than wrestling with their equipment. With their innovative design and technology, rotary tattoo machines can enhance an artist's precision, speed, and overall creativity, making them an essential investment for anyone serious about tattooing. In this article, we will delve deeper into the world of rotary tattoo machines, exploring their features, benefits, and how to choose the right one for your unique tattooing style.

PRECISION IS ART

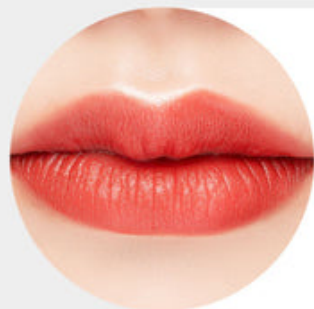
2.0 / 2.2 / 2.5 / 2.8 / 3.1 / 3.5 mm Stroke Adjustment Range
4mm Max Needle Extension.

6-Level Stroke Adjustment



2.2mm-2.5mm:

Ideal for delicate skin and low-saturation lines.



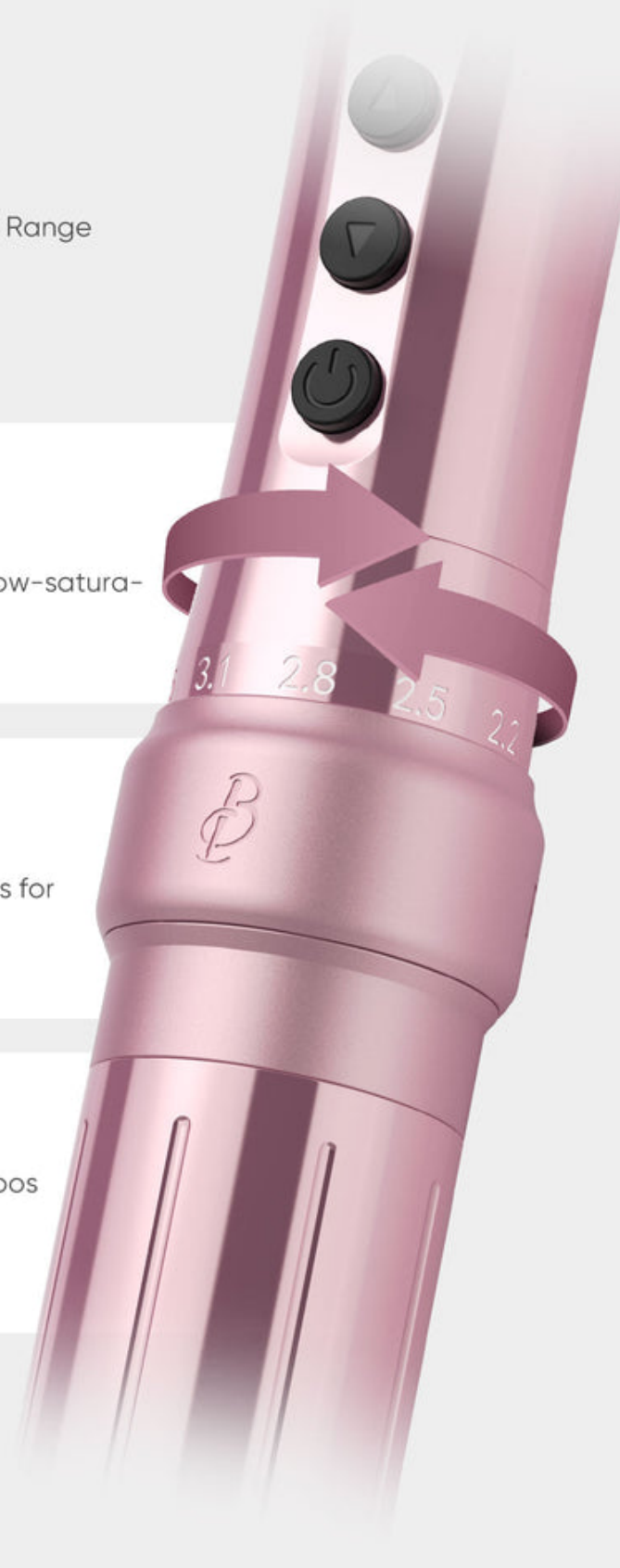
2.5mm-3.1mm:

Creates natural, refined lines for brows and lips.



3.1mm-3.5mm:

Handles creative small tattoos and high-saturation PMU.



Understanding Rotary Tattoo Machines

Rotary tattoo machines utilize an electromagnetic motor to drive the needle, which allows for a consistent and controlled motion. This technology is distinct from traditional coil machines, which rely on an electromagnetic circuit to create the needle's movement. One of the primary advantages of rotary machines is their versatility; they can be used for various tattooing techniques, from lining to shading, making them a favorite among many artists. Additionally, rotary tattoo machines tend to produce less noise and vibration, providing a more comfortable experience for both the artist and the client. This means that as a tattoo artist, you can focus on your artistry without distractions. Many artists find that the smoother operation of rotary machines helps them achieve better results, whether they are working on a complex piece or a simple outline.

Key Features of Professional Rotary Tattoo Machines

When choosing a rotary tattoo machine for professional use, there are several key features to consider. First, the weight of the machine can greatly affect your comfort during long sessions. A lightweight machine can reduce fatigue, allowing for extended periods of tattooing without strain. Ergonomic design is also crucial; a well-designed machine fits comfortably in your hand and provides optimal control over your movements. Next, consider needle compatibility. Different machines accommodate various needle types, so it's essential to choose one that aligns with your preferred tattooing techniques. Finally, the quality of the motor is paramount. A high-quality motor will ensure consistent power and performance, enabling you to create clean lines and smooth shading. Personal experiences shared by friends in the industry emphasize the importance of investing in a reliable machine that meets these criteria to elevate your artistry.

Choosing the Right Rotary Tattoo Machine for Your Style

Your tattooing style significantly influences the type of rotary machine you should choose. For instance, artists who specialize in realism may prefer machines that offer precision and control, allowing for intricate details and smooth gradients. On the other hand, those who focus on traditional or neo-traditional styles may benefit from machines that provide a bit more power for bold lines and vibrant colors. It's often helpful to test out different machines to see how they feel in your hands and how they perform on the skin. Some of my friends have shared their journeys of trial and error when selecting machines, emphasizing how finding the right fit can transform their tattooing experience. Understanding your unique style and the demands it places on your equipment is essential in making an informed choice that enhances your artistic expression.

Maintenance and Care for Rotary Tattoo Machines

Proper maintenance is crucial for ensuring the longevity and optimal performance of your rotary tattoo machine. Regularly cleaning your machine after each use is essential to prevent any buildup of ink and blood, which can affect its functionality. Utilize disinfectants and follow proper sterilization protocols to keep your machine safe and hygienic. Additionally, storing your machine properly is vital; consider using a padded case to protect it from dust and damage. Some artists also recommend routinely checking the motor and other components for wear and tear, as addressing any issues early can prevent more significant problems down the line. Taking these simple steps can ensure that your investment in a rotary tattoo machine remains worthwhile for years to come.

Maximizing Your Tattooing Potential with Rotary Machines

In conclusion, professional rotary tattoo machines offer a unique blend of technology and artistry that can significantly enhance your tattooing experience. With their smooth operation, ergonomic designs, and compatibility with various techniques, these machines empower artists to push the boundaries of their creativity. By understanding the essential features, choosing the right machine for your style, and maintaining it properly, you can unlock your full artistic potential. As you explore the world of rotary tattoo machines, you may find that the right tool can make all the difference in creating stunning tattoos that resonate with your clients and reflect your unique vision as an artist.