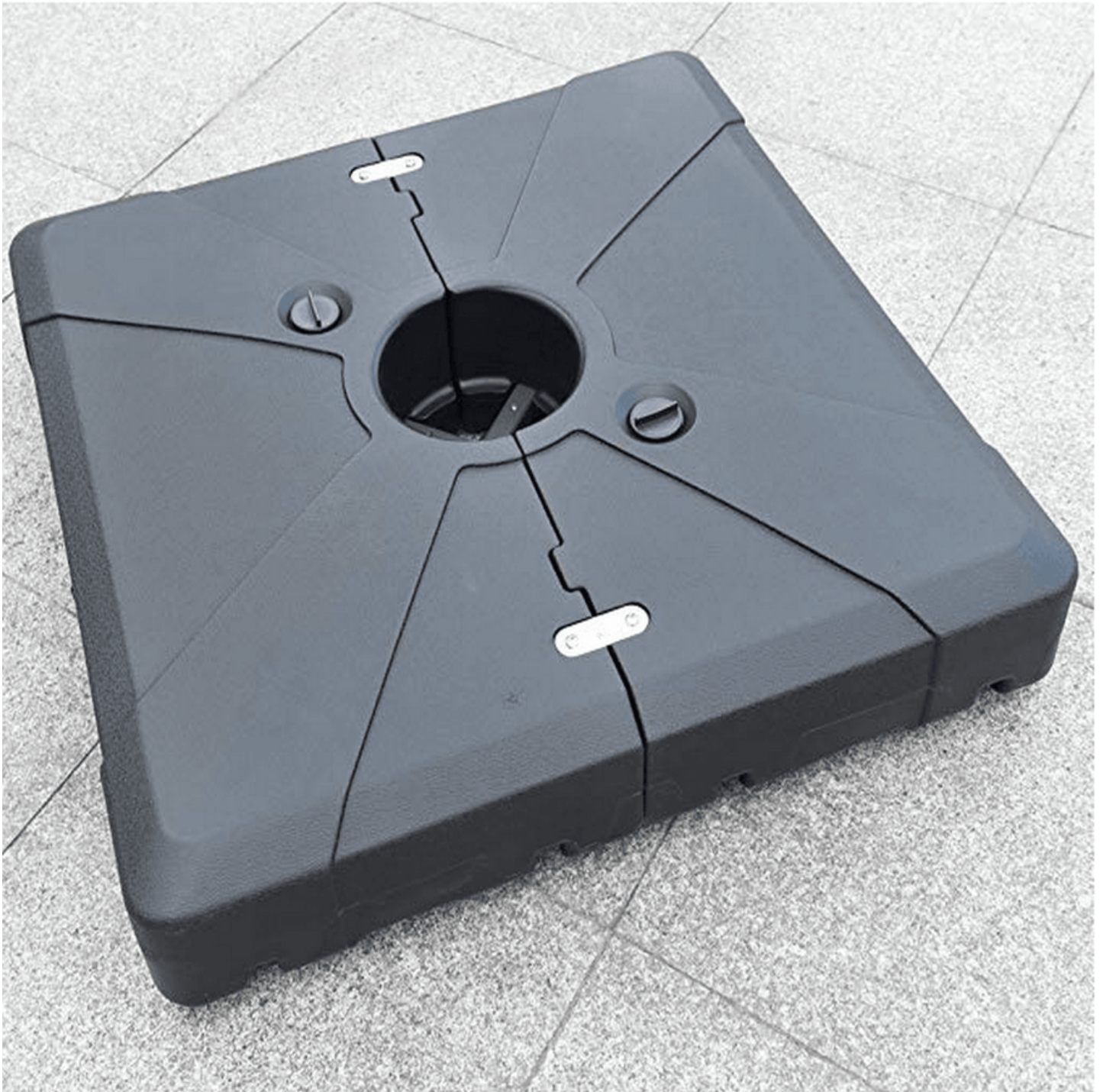


Unlock the Secret to Ultimate Shade: Discover the Magic of Tilt Patio Umbrella Bases!

As summer approaches, many of us dream of lounging outdoors under the warm sun, enjoying backyard barbecues, or sipping iced tea on a patio. However, with the sun's relentless rays, having a reliable source of shade becomes essential. This is where patio umbrellas come into play, transforming our outdoor spaces into comfortable retreats. Among the various features available, the tilt function stands out, allowing for a more customizable shade experience. This article will explore the benefits and functionality of [patio umbrella bases with tilt features](#), ensuring you can enjoy your outdoor oasis while staying cool and protected.



Understanding Patio Umbrella Bases

Patio umbrella bases are crucial accessories that provide stability and support to patio umbrellas, preventing them from toppling over in the wind or shifting with movement. These bases come in various types, including weighted, portable, and in-ground options, made from materials such as concrete, plastic, and metal. A sturdy base ensures that your umbrella remains upright and functional, even on breezy days. The tilt functionality, which allows the umbrella to be angled for optimal shade, is a modern feature that enhances the utility of these bases. By understanding the different types available, you can select a base that not only meets your stability needs but also complements the tilt function for maximum shade coverage.

The Benefits of Tilt Functionality

The tilt function in patio umbrella bases offers several advantages that significantly enhance the outdoor experience. One of the primary benefits is improved shade coverage. As the sun moves across the sky, a standard umbrella may not provide adequate protection during all hours. However, with a tilt function, you can adjust the angle of the umbrella, ensuring consistent shade regardless of the sun's position. This adaptability is particularly beneficial during hot summer days when you want to enjoy your patio without constantly repositioning your seating. Additionally, the tilt feature can enhance user comfort, allowing you to relax without worrying about sunburn or overheating. Friends who have installed tilt umbrellas rave about how it has transformed their outdoor gatherings, making them more enjoyable and relaxing.

How to Choose the Right Tilt Patio Umbrella Base

Selecting the right tilt patio umbrella base involves several considerations to ensure optimal performance and aesthetic appeal. First, assess the size and weight of your umbrella, as the base must provide adequate support to prevent tipping. A general rule is to choose a base that weighs at least half the umbrella's height for stability. The material of the base is also crucial; concrete and metal bases tend to offer more durability compared to plastic options. Additionally, take into account the design of the base to ensure it complements your outdoor décor. Whether you prefer a sleek, modern look or a more traditional style, there are plenty of options available to match your patio theme. Lastly, consider portability if you plan to move the umbrella frequently; lightweight bases with handles can be a practical choice.

Maintenance and Care for Tilt Patio Umbrella Bases

To prolong the lifespan and functionality of your tilt patio umbrella base, regular maintenance and care are essential. Start by cleaning the base periodically to remove dirt, dust, and debris that may accumulate over time. For most materials, a simple mixture of mild soap and water will suffice. Avoid harsh chemicals that could damage the finish. Additionally, it's important to inspect the tilt mechanism to ensure it operates smoothly; lubricating the joints occasionally can prevent rust and enhance functionality. During the off-season, store the umbrella and base in a dry, sheltered location to protect them from harsh weather conditions. Friends who've taken the time to maintain their patio setups often find that their umbrella bases last for many seasons, providing reliable shade year after year.

Transform Your Outdoor Space with Stylish Shade Solutions

In summary, patio umbrella bases with tilt functionality are invaluable additions to any outdoor space, offering enhanced shade coverage and improved comfort during sunny days. By understanding the various types of bases available and their benefits, you can make an informed decision that elevates your outdoor experience. Regular maintenance will ensure your umbrella base remains in top condition, providing lasting enjoyment. Whether you're hosting a summer barbecue or enjoying a quiet afternoon, a tilt patio umbrella base can transform your outdoor area into a stylish and comfortable oasis. Consider investing in one for your patio and unlock the secret to ultimate shade!