

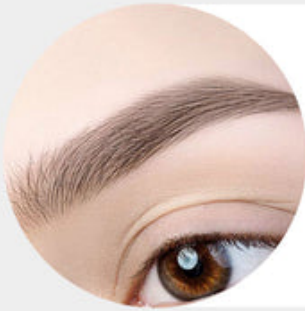
## Uncover the Secrets of Tattoo Guns: What Every Ink Enthusiast Must Know!

Tattoo guns are an essential tool in the art of tattooing, playing a pivotal role in bringing intricate designs and personal expressions to life on skin. As the popularity of tattoos continues to rise, so does the interest in understanding the equipment that makes this art form possible. Whether you're a seasoned tattoo artist, an aspiring tattooist, or simply an ink enthusiast, knowing about [tattoo guns](#) can significantly enhance your appreciation for this craft. This article will delve into the various types of tattoo guns, their functionalities, and the crucial safety considerations every user must keep in mind.

# PRECISION IS ART

2.0 / 2.2 / 2.5 / 2.8 / 3.1 / 3.5 mm Stroke Adjustment Range  
4mm Max Needle Extension.

## 6-Level Stroke Adjustment



### 2.2mm-2.5mm:

Ideal for delicate skin and low-saturation lines.



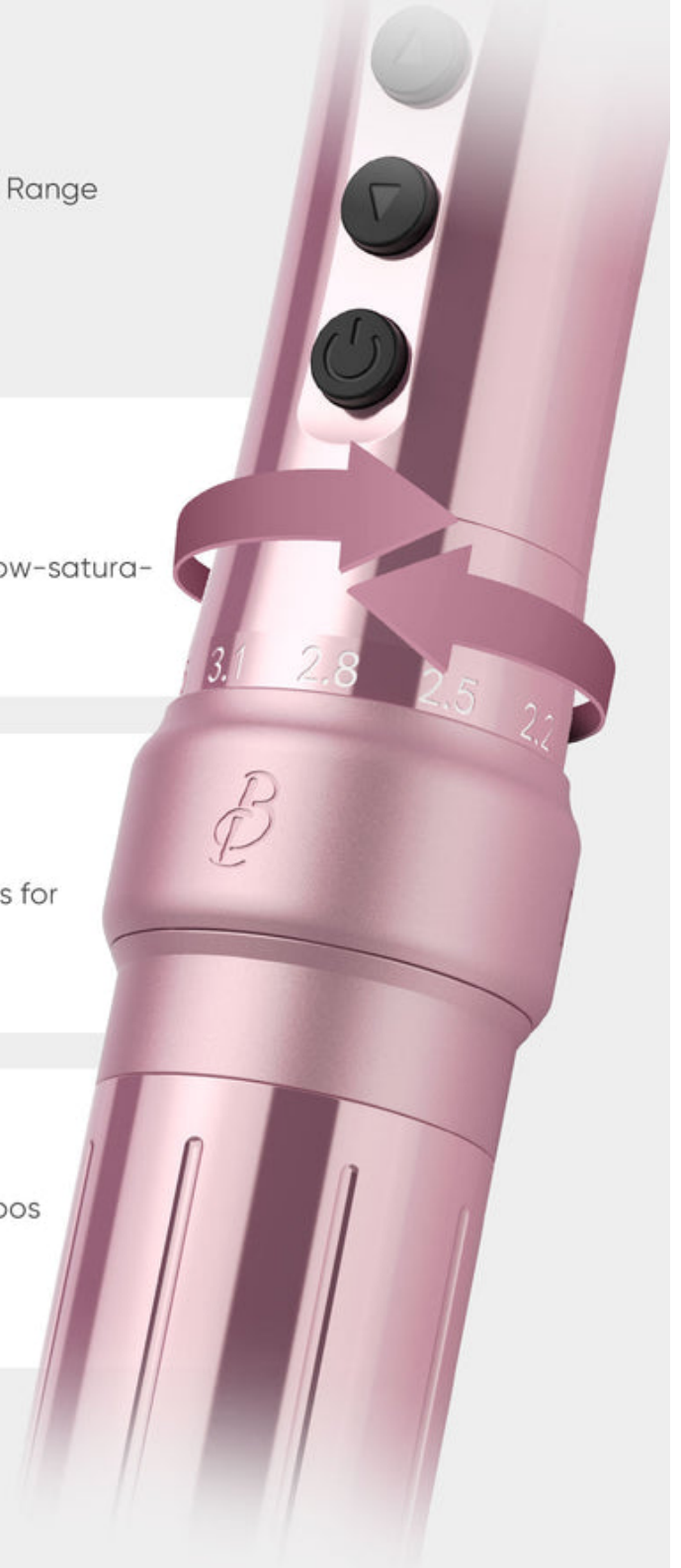
### 2.5mm-3.1mm:

Creates natural, refined lines for brows and lips.



### 3.1mm-3.5mm:

Handles creative small tattoos and high-saturation PMU.



## Understanding Tattoo Guns

Tattoo guns, often referred to as tattoo machines, are devices that puncture the skin to inject ink and create permanent designs. Essentially, they function by using a needle that moves up and down rapidly, depositing ink into the dermal layer of the skin. The process involves a power supply that energizes the machine, causing the needles to puncture the skin at a specific depth to ensure smooth ink application. A tattoo gun's design and mechanics are crucial for achieving precision in tattoo work. Many artists find that understanding how their tattoo gun operates can greatly influence the quality of their work, allowing for better control over line work, shading, and color saturation.

## Types of Tattoo Guns

When it comes to tattoo guns, there are primarily two types: rotary and coil machines. Each type has its own design, functionality, and preferred uses, catering to different styles and preferences among tattoo artists. Rotary machines utilize a motor to drive the needle, offering a quieter and smoother operation. They are often preferred for their ease of use and versatility, making them suitable for both line work and shading. On the other hand, coil machines operate using electromagnetic coils to move the needle. This traditional type is known for its distinct sound and feel, often favored by artists who appreciate the tactile feedback it provides. Understanding these differences can help artists choose the right machine for their specific tattooing needs.

### Rotary Tattoo Guns

Rotary tattoo guns are known for their lightweight design and minimal vibration, making them comfortable to handle during long tattoo sessions. They feature a simple mechanism that allows for easy adjustments, enabling artists to switch between different needle configurations quickly. Many artists, including a friend of mine who is a tattoo artist, prefer rotary machines for their reliability in creating smooth gradients and soft shading. They also tend to produce less trauma to the skin, resulting in quicker healing times for clients.

### Coil Tattoo Guns

Coil tattoo guns are often praised for their power and precision. They require a bit more setup and can be heavier than rotary machines, but many artists enjoy the control they offer. The ability to fine-tune the machine's settings allows artists to achieve specific effects, from bold lines to delicate shading. A tattooist I know swears by his coil machine for intricate designs, citing its responsiveness to different techniques as a significant advantage in his work.

## Functionality of Tattoo Guns

The functionality of tattoo guns revolves around several key components: the needle, power supply, grip, and frame. The needle is the most critical component, as it determines the ink's application and the type of design that can be achieved. Different needle configurations exist for various effects, such as outlining or shading. The power supply, which can be adjustable, controls the speed at which the needle moves, impacting the overall tattooing experience. A comfortable grip is vital for artists to maintain control and precision during the tattooing process. Lastly, the frame holds all these components together, and its design can affect the machine's weight and balance, influencing how it feels in the artist's hand. Understanding these components allows tattoo artists to make informed choices about their equipment, ultimately enhancing their tattooing skills.

## Safety Considerations When Using Tattoo Guns

Safety and hygiene are paramount in tattooing. Tattoo artists must adhere to strict sanitation practices to prevent infections and ensure the well-being of their clients. This includes sterilizing all equipment before and after each use, using disposable needles, and maintaining a clean work environment. Proper training is essential for anyone looking to use a tattoo gun, as it ensures they understand the risks and best practices involved in the tattooing process. It's also crucial for artists to be aware of their own health and the health of their clients, as skin conditions or allergies can arise. By prioritizing safety, artists not only protect themselves and their clients but also enhance the overall tattooing experience.

## Key Insights on Tattoo Guns

In conclusion, tattoo guns are indispensable tools in the world of tattooing, each type offering unique functionalities that cater to different artistic styles and preferences. Understanding the mechanics, types, and safety considerations associated with tattoo guns is essential for both current and aspiring tattoo artists. As the tattooing community continues to grow, so does the importance of education and safe practices. Whether you're looking to start your tattooing journey or simply want to appreciate the artistry behind it, knowing about tattoo guns can deepen your connection to this vibrant art form.