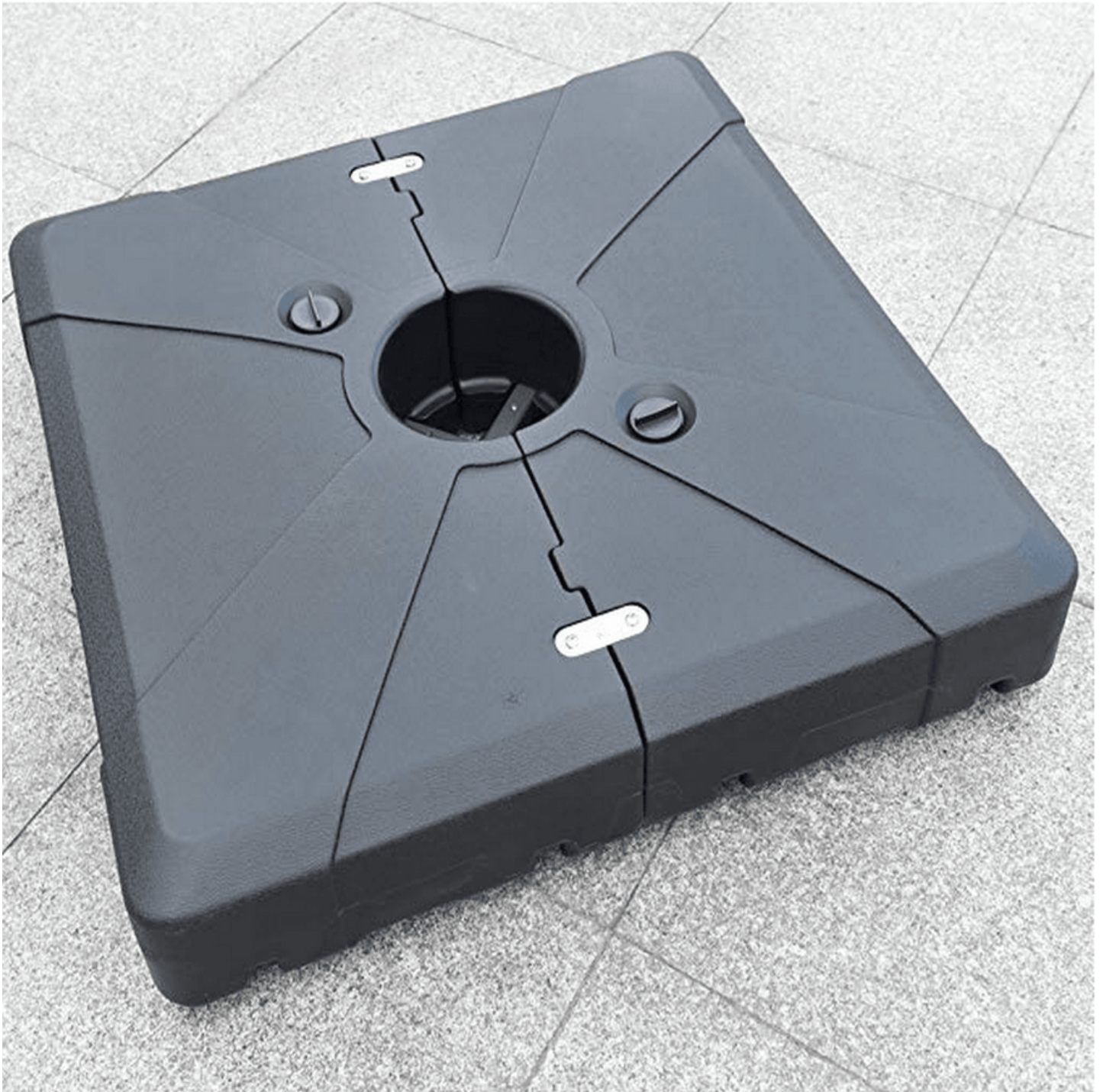


## Transform Your Hot Tub Experience: Discover the Perfect Patio Umbrella Bases!

Creating a comfortable environment around your hot tub is essential for maximizing relaxation and enjoyment. One of the key elements to consider is the patio umbrella. A well-chosen patio umbrella not only offers shade from the sun but also adds a touch of elegance to your outdoor space. The base of the umbrella plays a crucial role in ensuring it remains stable, particularly in areas exposed to wind or movement. In this article, we will explore the different types of [patio umbrella bases](#) suitable for your hot tub area, helping you make an informed decision that enhances your outdoor experience.



### Understanding Patio Umbrella Bases

A patio umbrella base serves a fundamental purpose: it provides stability to the umbrella, preventing it from tipping over in breezy conditions. When selecting a base, you must consider various factors, including weight, material, and compatibility with your selected umbrella size. Heavier bases are often more stable, while materials like concrete, resin, or plastic can affect the base's durability and ease of movement. Knowing the specifics of your umbrella, such as its height and diameter, will help you choose a base that ensures your umbrella remains securely anchored, allowing you to enjoy your hot tub worry-free.

### Types of Patio Umbrella Bases

When it comes to patio umbrella bases, there are several options to consider, each with its unique features and benefits:

## 1. Weighted Bases

Weighted bases are designed to provide excellent stability, making them a popular choice for outdoor environments. Typically made from heavy materials like concrete or sand-filled plastic, these bases can withstand considerable wind forces. They are particularly useful in regions where gusts are common. A friend of mine once had a weighted base that kept their umbrella secure during a sudden storm, allowing them to continue enjoying their hot tub without interruption.

## 2. In-Ground Bases

In-ground bases are a more permanent solution, providing a sturdy anchor for your patio umbrella. Installed directly into the ground, they are ideal for those who want a reliable setup around their hot tub. The installation process usually involves digging a hole and securing the base in concrete, making it a great option for long-term use. One of my neighbors has an in-ground base next to their hot tub, creating a seamless look and ensuring that the umbrella stays put, even during windy days.

## 3. Table Bases

Table bases offer a dual functionality by serving as both an umbrella anchor and a table support. This type is particularly suitable for smaller outdoor spaces where maximizing utility is essential. They can be great for those who enjoy snacks or drinks while soaking in the hot tub. A friend recently installed a table base next to their hot tub, allowing them to enjoy refreshments without the hassle of moving around too much.

## 4. Portable Bases

Portable bases are designed for flexibility, making it easy to move your umbrella wherever you need it. They are lightweight and often come with wheels or handles for easy transportation. This type is perfect for those who like to rearrange their outdoor space frequently or want the option to store the umbrella during off-seasons. One summer, I borrowed a portable base from a friend for a barbecue, and it made shifting the umbrella to shade areas effortless!

## Choosing the Right Base for Your Hot Tub Area

Selecting the perfect patio umbrella base for your hot tub area involves considering your specific needs and preferences. Assess the space you have available and determine if you want a permanent or portable solution. If you frequently entertain guests or enjoy changing your setup, a portable base might be ideal. However, if your hot tub area is in a windy location, investing in a weighted or in-ground base would provide the necessary stability. Additionally, think about the aesthetics of your outdoor space; a base that complements your hot tub and patio design can enhance the overall look of your area. Personal preferences, such as ease of use and maintenance, should also guide your decision. By carefully evaluating these factors, you can choose a patio umbrella base that perfectly aligns with your hot tub experience.

## Final Thoughts on Patio Umbrella Bases

In summary, selecting the right patio umbrella base is vital for enhancing your hot tub experience. The appropriate base not only contributes to the stability and safety of your umbrella but also adds to the overall comfort of your outdoor relaxation. Whether you prefer the permanence of an in-ground base, the flexibility of a portable model, or the dual functionality of a table base, understanding the options available will help you make an informed choice. Take the time to evaluate your hot tub setup and consider the various types of umbrella bases discussed here to elevate your outdoor enjoyment to new heights.