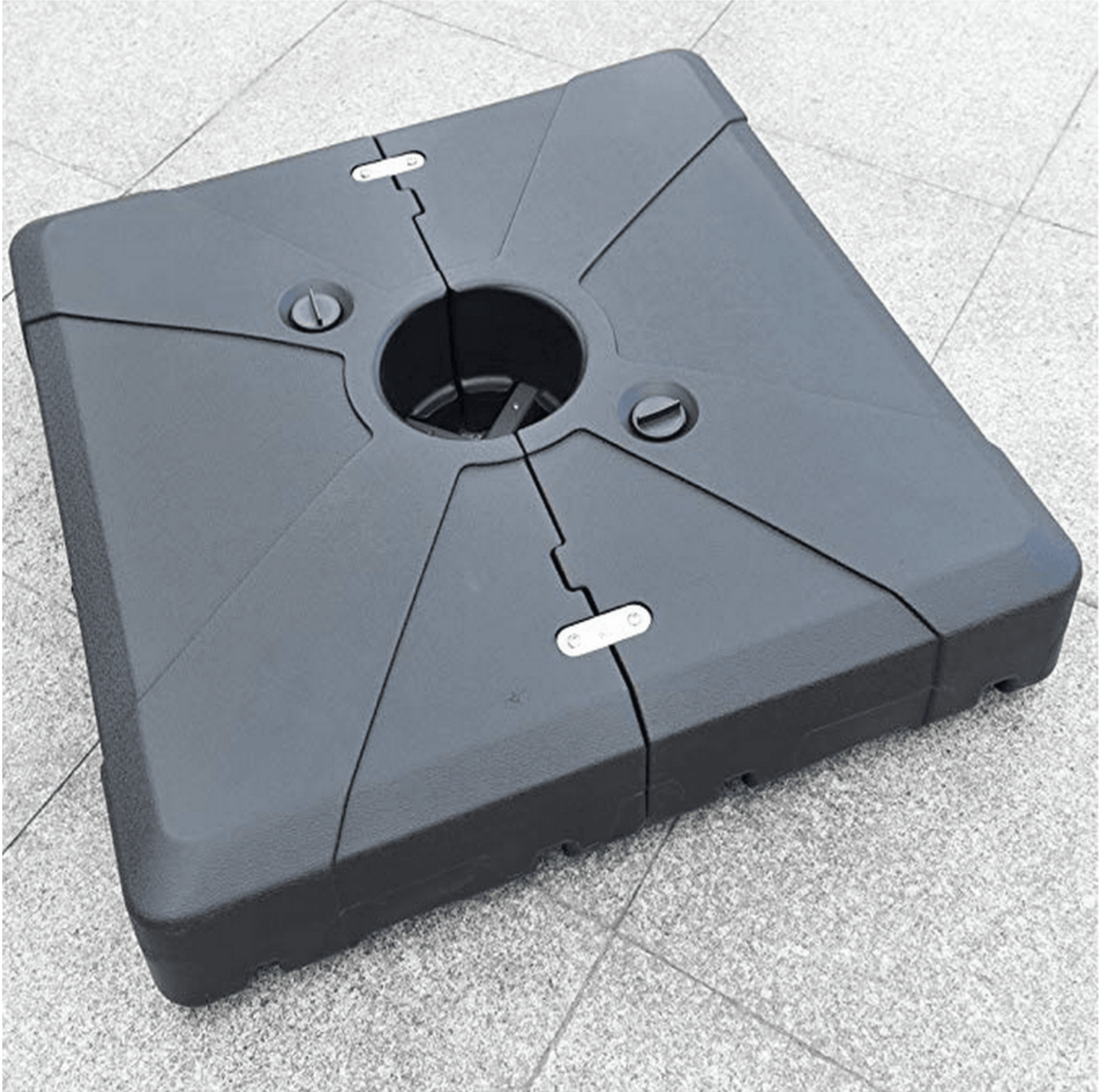


Unlock Your Outdoor Oasis: The Secret to Choosing the Perfect Patio Umbrella Base!

Creating an inviting outdoor space is essential for enjoying the beauty of nature while having a comfortable place to relax. One key element that often gets overlooked in the quest for the perfect patio setup is the [patio umbrella base](#). This seemingly simple accessory plays a vital role in ensuring your umbrella remains stable and secure, providing you with the shade you need during those hot summer days. A good base not only contributes to safety by preventing the umbrella from tipping over but also adds to the overall aesthetics of your outdoor area. With the right patio umbrella base, you can elevate your outdoor experience and create a true oasis right in your backyard.



Understanding the Role of a Patio Umbrella Base

A patio umbrella base is designed to anchor your umbrella securely, allowing it to remain upright even in breezy conditions. Without a proper base, your patio umbrella is at risk of falling over, which can lead to damage or even injury. There are several types of bases available, including weighted bases, which often contain materials like concrete or sand, and can be filled to provide additional stability. Another popular option is the stand-alone base, which can be aesthetically pleasing and made from materials like resin or metal. Each type of base has its unique characteristics, so it's essential to choose one that aligns with your specific needs and the environment in which it will be used.

Factors to Consider When Choosing a Patio Umbrella Base

When selecting a patio umbrella base, one of the most critical factors is weight. The size of your umbrella and the typical wind conditions in your area will determine the weight requirements for the base. For instance, larger umbrellas should have heavier bases to prevent them from being toppled by strong gusts. Additionally, the materials used in the base can affect its durability. Common materials include plastic, metal, and concrete, each offering different levels of strength and resistance to the elements. Consider your local weather conditions when choosing the material, as some may be more prone to wear and tear than others.

Styles and Aesthetics of Patio Umbrella Bases

While functionality is crucial, the style of your patio umbrella base can also significantly enhance your outdoor decor. Bases come in a variety of designs, from sleek and modern to classic and ornate, allowing you to select one that complements your existing outdoor furniture. Color is another factor to consider; a base in a neutral tone can blend seamlessly with your surroundings, while a bold color can serve as a statement piece. Personalizing your outdoor space with the right base not only provides the necessary support for your umbrella but also contributes to a cohesive and visually appealing patio environment.

Common Mistakes to Avoid When Buying a Patio Umbrella Base

Many people make common mistakes when purchasing a patio umbrella base, such as underestimating the weight needed for their specific umbrella size. A base that is too light can be easily knocked over, especially in windy conditions. Additionally, it's essential to ensure that the base is compatible with your umbrella type. Some umbrellas require specific types of bases or connectors, and failing to check for this compatibility can lead to disappointment and added expenses. Always keep these considerations in mind to avoid pitfalls and ensure your outdoor setup is as safe and enjoyable as possible.

Choosing the Right Patio Umbrella Base for Your Outdoor Space

In conclusion, selecting the right patio umbrella base is crucial for enhancing your outdoor experience. By understanding the role of the base, considering important factors such as weight and material, and choosing a style that complements your decor, you can create a beautiful and functional outdoor oasis. Remember to avoid common mistakes like underestimating weight requirements and ensuring compatibility with your umbrella type. By taking the time to choose the right base, you'll enjoy your outdoor space even more, making it a perfect retreat for relaxation and entertainment.