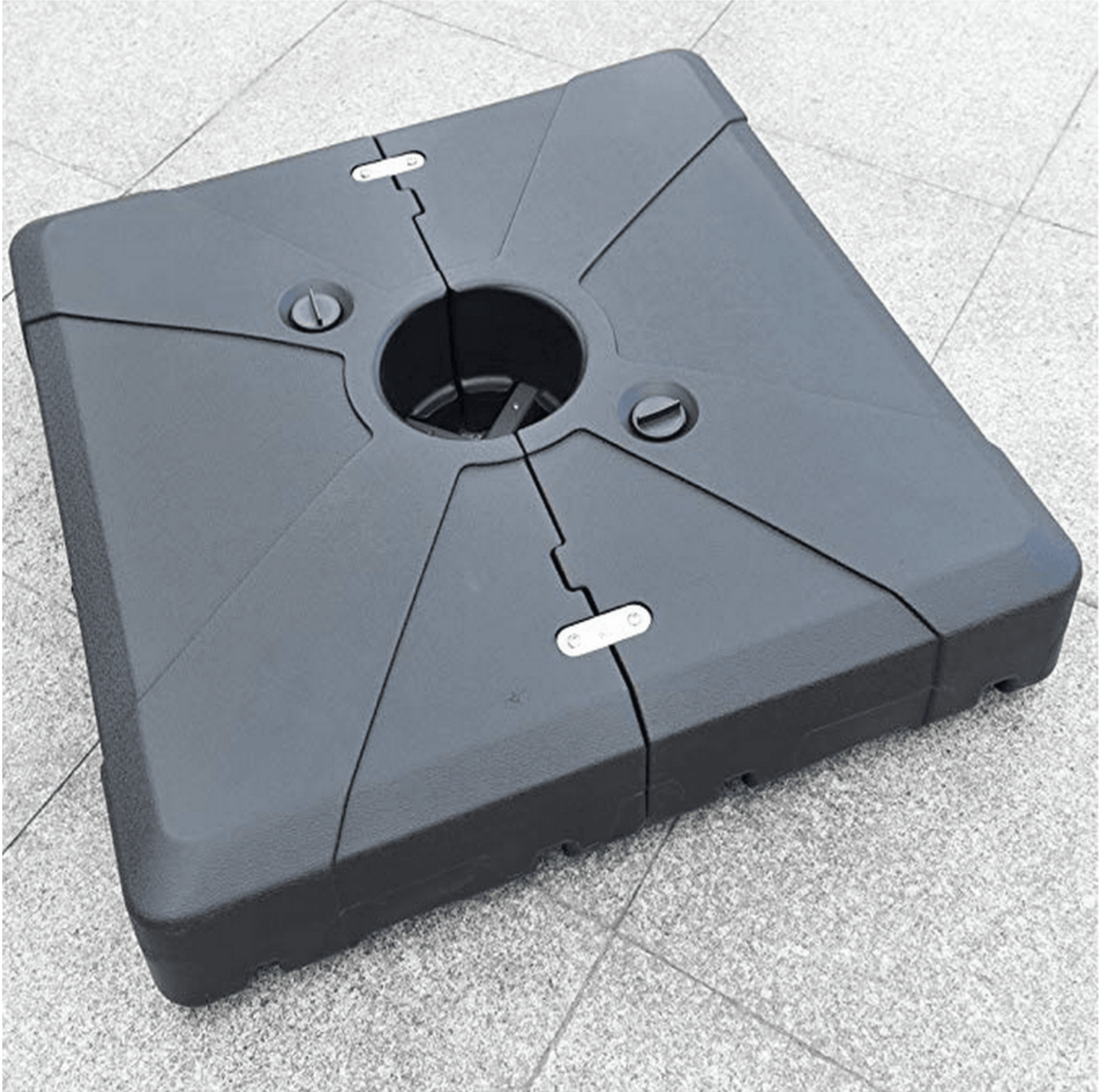


Transform Your Poolside Experience: Discover the Perfect Patio Umbrella Base!

When the sun is shining bright and the temperature rises, there's nothing quite like lounging by the pool. However, to truly maximize your comfort and enjoyment, a reliable [patio umbrella base for poolside lounge chairs](#) is essential. The right umbrella base not only provides shade but also enhances your outdoor experience by shielding you from harsh UV rays while you soak up the sun. As someone who enjoys spending lazy summer afternoons by the pool, I can tell you that having a sturdy umbrella base has made all the difference in my relaxation routine. In this article, we will explore various options available in the market, their features, and how they can elevate your poolside lounging experience.



Understanding the Importance of a Stable Umbrella Base

A stable umbrella base is critical for ensuring safety and stability, especially in outdoor settings where wind can be unpredictable. Imagine settling into your favorite lounge chair, only to have your umbrella topple over due to a sudden gust of wind. Such scenarios can lead to accidents, damage to your umbrella, or even injury to you or those around you. A reliable base helps keep your umbrella securely anchored, providing peace of mind as you enjoy your time by the pool. It's not just about comfort; it's about creating a safe and enjoyable environment for everyone. Investing in a sturdy umbrella base is a small price to pay for the safety and enjoyment it brings to your poolside gatherings.

Types of Patio Umbrella Bases

When it comes to patio umbrella bases, there are several types available to suit various needs and preferences. Here's a breakdown of the most common types:

- **Fillable bases:** These bases can be filled with water or sand, making them heavier and more stable. They are often portable, allowing for easy relocation.
- **Concrete bases:** Known for their durability and weight, concrete bases provide excellent stability but can be cumbersome to move.
- **Decorative bases:** These bases combine functionality with aesthetics. They often come in stylish designs that can enhance the look of your outdoor space.
- **Table-mounted bases:** These are integrated into outdoor tables, leaving more floor space free while still providing support for an umbrella.

Each type has its unique features and benefits, making it essential to choose one that aligns with your personal needs and the layout of your poolside area.

Pros and Cons of Each Type

Understanding the advantages and disadvantages of each type of patio umbrella base is vital in making an informed decision:

- **Fillable bases:** Pros include portability and adjustable weight, while cons include potential leaks and the hassle of filling and emptying.
- **Concrete bases:** These bases offer excellent stability but can be heavy and difficult to move around.
- **Decorative bases:** They enhance aesthetic appeal but might compromise on weight and stability.
- **Table-mounted bases:** They save space but may limit your umbrella's height and shade coverage.

By weighing these pros and cons, you can better determine which type of base will serve you best in your poolside setup.

Factors to Consider When Choosing a Base for Poolside Lounge Chairs

Selecting the right patio umbrella base involves considering several key factors:

- **Weight and stability:** Ensure the base can withstand wind and accidental bumps while keeping your umbrella secure.
- **Size and compatibility:** Consider the size of your umbrella and lounge chairs to ensure a good fit that doesn't obstruct your lounging space.
- **Material and weather resistance:** Look for materials that can endure outdoor conditions without deteriorating.
- **Aesthetic preferences:** Choose a design that complements your outdoor décor and enhances the overall ambiance of your poolside area.

By keeping these factors in mind, you can choose a base that not only meets functional requirements but also suits your personal style.

Comparing Base Options: A Quick Guide

In summary, here's a quick guide to help you compare the different types of patio umbrella bases:

- **Fillable bases:** Versatile and portable but may require maintenance.
- **Concrete bases:** Extremely stable but heavy and less mobile.
- **Decorative bases:** Aesthetic appeal with varying degrees of stability.
- **Table-mounted bases:** Space-saving but can limit shade coverage.

This comparative analysis can serve as a valuable tool as you weigh your options and make an informed decision about the best patio umbrella base for your poolside lounge chairs.

Final Thoughts on Choosing the Right Umbrella Base

Choosing the right patio umbrella base is crucial for enhancing your overall poolside experience. A dependable base not only keeps your umbrella steady but also ensures your comfort and safety while you relax under the sun. As you consider your options, take the time to reflect on your specific needs and preferences. With the right base, you can create a tranquil and stylish lounging area that allows you to fully enjoy your outdoor oasis. Take the plunge and invest in a quality patio umbrella base that will elevate your summertime enjoyment!