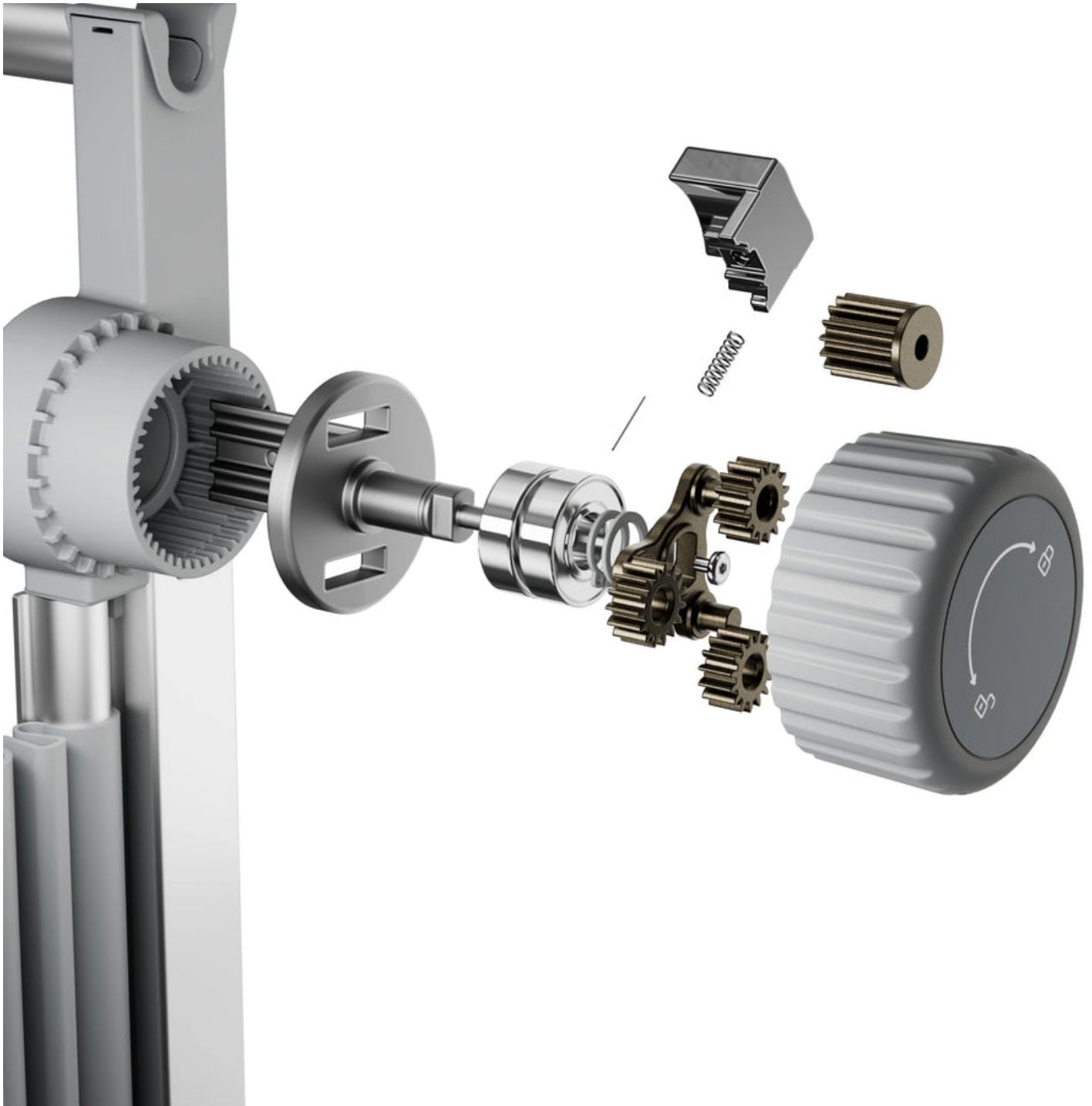


Unlock the Secrets of Tufting: Discover the Magic Behind the Tufting Frame!

Tufting is an ancient art form that has recently surged in popularity among crafters and DIY enthusiasts alike. With its tactile and visually appealing results, tufting allows anyone to create unique pieces that can transform a space. At the heart of this craft lies the [tufting frame](#), a key tool that provides structure and support for various tufting projects. In this article, we will explore what a tufting frame is, its significance in the tufting process, and how it can elevate your crafting endeavors.



Whether you are a seasoned crafter or just starting your tufting journey, understanding the tufting frame is essential for achieving the best results. Join us as we delve into the components, usage, and benefits of using a tufting frame, ensuring you have all the knowledge to create stunning tufted products with confidence.

Understanding the Tufting Frame

A tufting frame is a specialized piece of equipment designed to hold the backing material taut while you create your tufted designs. Typically made from wood or metal, it consists of a sturdy rectangular or square frame that allows for easy manipulation of the fabric. The frame is fitted with a series of clamps or tacks along the edges to secure the backing material, ensuring it remains in place during the tufting process.

There are various types of tufting frames available, each tailored to different styles of tufting. For instance, some frames are adjustable, allowing you to alter the size based on your project. Others are designed specifically for rug tufting, featuring a larger surface area to accommodate bigger pieces. Additionally, some frames come equipped with a built-in mechanism for tensioning the fabric, which can be particularly helpful for beginners learning how to create even, consistent

tufts. Understanding these different designs and their functionalities can help you choose the right tufting frame for your needs.

How to Use a Tufting Frame

Setting up a tufting frame is a straightforward process, but it's essential to follow a few key steps to ensure success. Begin by selecting your backing material, which can range from burlap to canvas, depending on your project. Once you have your material, lay it flat on the tufting frame and secure it using the clamps or tacks. Make sure it is taut but not overstretched, as this can affect the final outcome of your tufted piece.

Next, gather your tufting tools, which typically include a tufting gun, yarn or fabric strips for tufts, and a pair of scissors. With everything in place, start tufting by inserting the gun into the backing material and pulling the trigger to create tufts. Work methodically, moving across the frame in rows or sections to maintain consistency in your design. As a tip, begin with a simple pattern to get familiar with the process before moving on to more complex designs. Remember, practice makes perfect!

The Benefits of Using a Tufting Frame

Utilizing a tufting frame in your crafting process has several advantages over traditional tufting methods. First and foremost, it provides stability, enabling you to create precise and uniform tufts. The tension created by the frame allows for cleaner lines and a more polished finish, which is crucial for achieving professional-looking results.

Moreover, tufting frames can significantly enhance efficiency. With the backing material securely held in place, you can work faster and focus solely on your design without the distraction of adjusting your fabric constantly. This streamlined approach is especially beneficial for larger projects, allowing you to cover more area without sacrificing quality.

Common Mistakes to Avoid When Using a Tufting Frame

While tufting frames simplify the tufting process, beginners often encounter several common pitfalls. One frequent mistake is not ensuring that the backing material is adequately secured; if it shifts during tufting, it can lead to uneven tufts and a messy finish. Always double-check your clamps or tacks before starting your project.

Another mistake is using the wrong type of yarn or fabric for your project. Not all materials are suitable for tufting, and using the wrong ones can result in a less durable finished piece. It's essential to research and choose the appropriate materials that will hold up well under tension and wear. Lastly, avoid rushing through the tufting process. Take your time to create consistent tufts and enjoy the creative journey.

Maximizing Your Tufting Experience

In summary, the tufting frame is an invaluable tool for anyone looking to explore the art of tufting. By understanding its components, proper usage, and the benefits it offers, you can enhance your crafting experience and produce beautiful tufted pieces. Remember to avoid common mistakes, and don't hesitate to experiment with your designs. Embrace your creativity and dive into the wonderful world of tufting with confidence, knowing that the right tools are at your disposal.